

# SPOOKTACULAR Explore it!

## Magnetic Ghost House Escape Maze

Time: 15 minutes

We don't really think about it, but magnets play a big part in our daily lives. Magnetism is working to produce energy inside wind turbines and hydroelectric generators. Closer to home, magnetism is working inside your speakers and computers and even keeping your cabinet doors closed. As you learn about magnets and the pull they have with the metal community, put them to the test in the magnetic maze game.

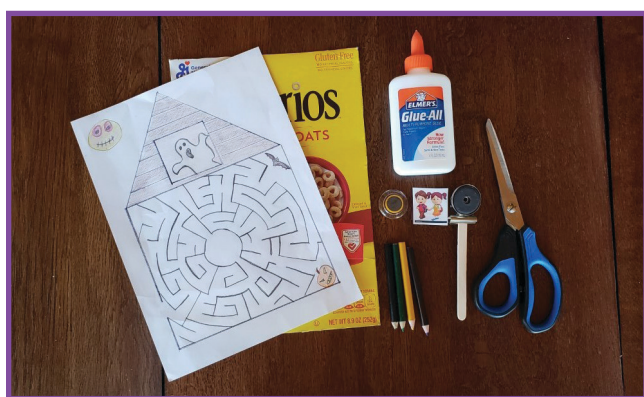
Using the magic of magnets, help these stranded kids escape through the ghost house maze. You will need a powerful magnetic force to avoid all of the dangers that lurk within.

### Materials List

1. 2 small magnets
2. Cereal box
3. Popsicle stick
4. Small button or similar shaped item
5. Glue
6. Ghost house printout or your own maze image
7. Markers, colored pencils or crayons
8. Paper

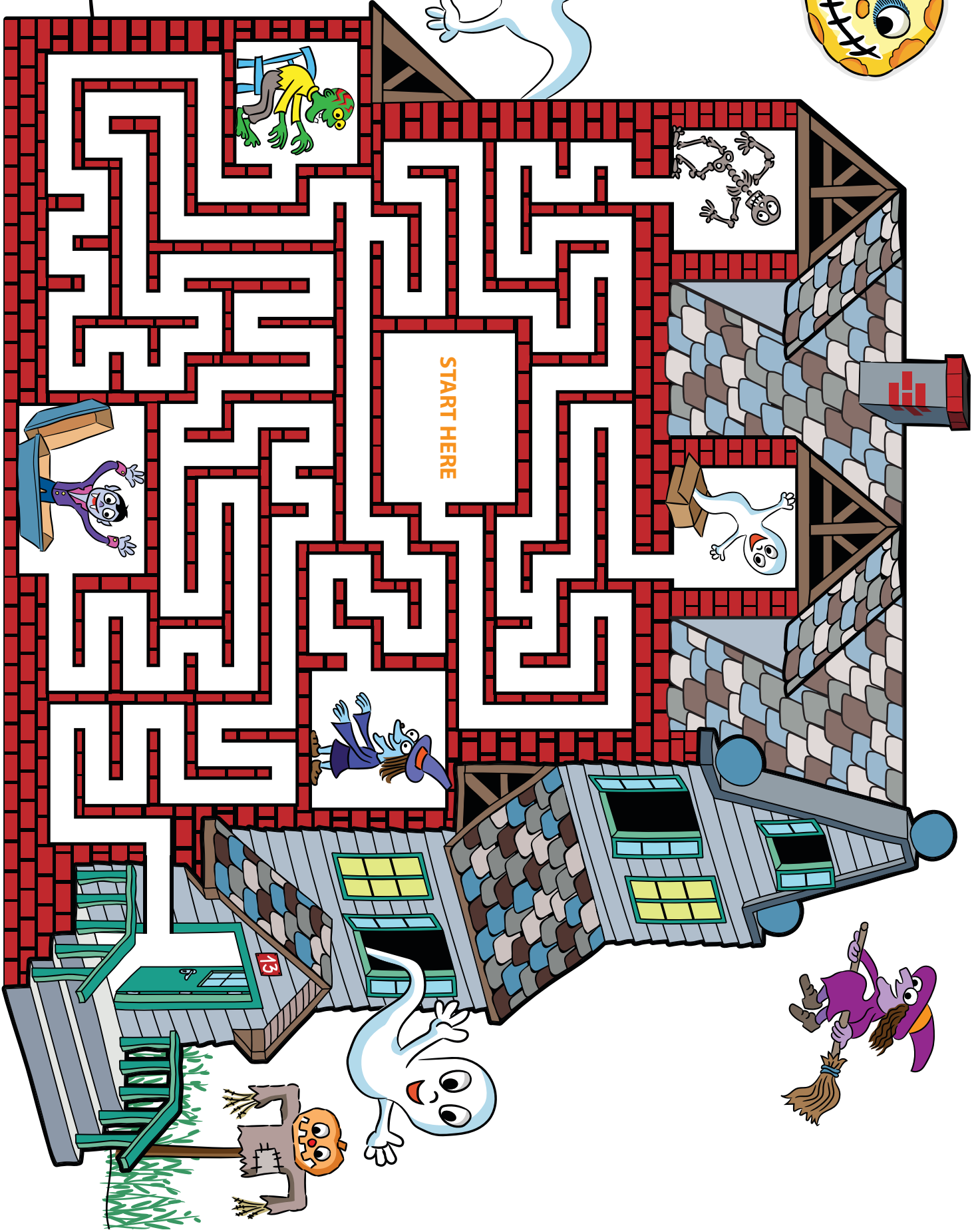
### Instructions

1. Print ghost house maze and small image of children or create your own ghost house on a piece of paper
2. Cut front of cereal box, keeping the rectangle section (8.5"x11") and discarding remainder
3. Glue and let dry:
  - maze printout or your own maze creation onto cereal box cutout
  - one small magnet to the bottom of a button and the image of the children to the top side of button
  - one small magnet to the end of a popsicle stick
4. To rescue children from the ghost house, hold the popsicle stick with the magnet underneath the cardboard maze. Put the magnetized button on top of the cardboard at the beginning of the maze. The magnets on the stick and on the button will attract through the cardboard. The popsicle stick will allow you to control the movements of the buttons through the maze.

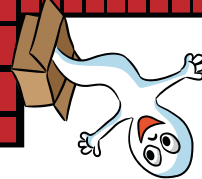
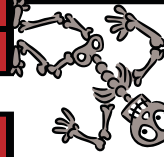


### Table Talk

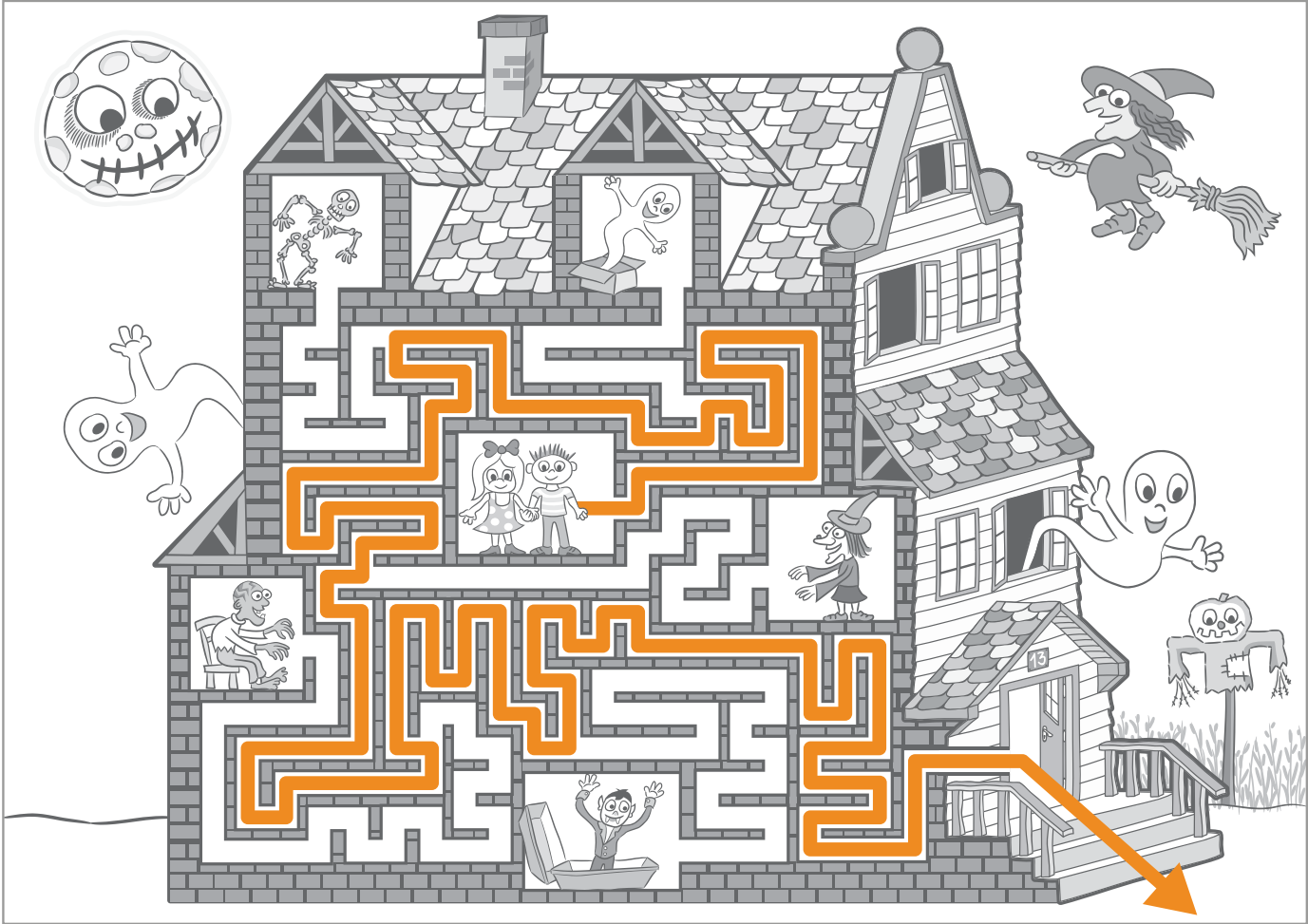
Can you think of anything around your house that uses magnets to save energy? Hint: something in your kitchen? Walk around your house with your magnet on a stick and see what other objects it attracts.



START HERE



# SPOOKTACULAR Explore it!



# ANSWER



Cut out